



GAT MONTHLY MEMBERSHIP PROGRESS REPORT

Results as of: 3/31/2024

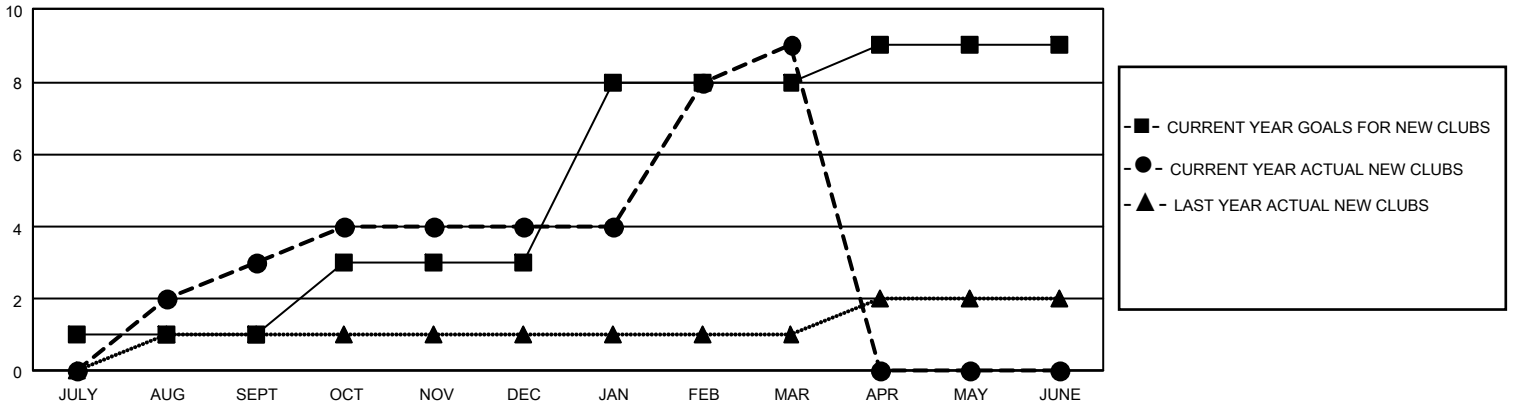
GMT Constitutional Area 4, Group D

REPORT DOES NOT INCLUDE CLUBS IN UNDISTRICTED AREAS.

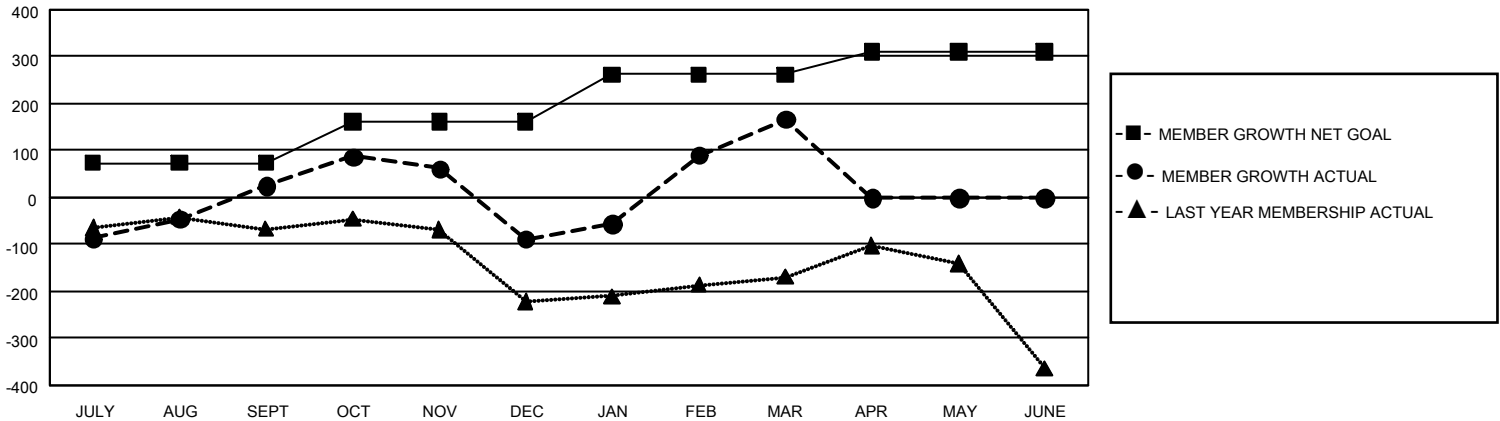
Clubs			
RESULTS FOR 2023-2024			
QUARTER	NEW CLUB GOAL	NEW CLUBS	DROPPED CLUBS
JULY/AUG/SEPT	3	3	5
OCT/NOV/DEC	6	1	0
JAN/FEB/MAR	15	5	3
APR/MAY/JUNE	3	0	0

Members			
RESULTS FOR 2023-2024			
QUARTER	MEMBER GROWTH NET GOAL	MEMBER GROWTH ACTUAL	DROPPED MEMBERS ACTUAL (including transfers)
JULY/AUG/SEPT	74	218	179
OCT/NOV/DEC	87	141	243
JAN/FEB/MAR	101	336	61
APR/MAY/JUNE	48	0	0

GOALS AND ACTUAL NEW CLUBS CUMULATIVE



GOALS AND ACTUAL MEMBERS CUMULATIVE



DROPPED CLUBS: 8 DROPPED MEMBERS DECEASED 25 CLUB CANCELLED 48 OTHER 410 TOTAL 483	140 CLUBS OF 270 ADDED 1 OR MORE NEW MEMBERS	GENDER DISTRIBUTION MALE 2,204 (40.10%) FEMALE 3,290 (59.86%) NON BINARY 0 (0.00%) PREFER NOT TO ANSWER 2 (0.04%)
	CLICK HERE FOR CUMULATIVE MEMBERSHIP DATA	TOTAL FAMILY UNIT MEMBERS 880 FAMILY MEMBERS PAYING HALF DUES 463